

KALLO COLLECTIVE: CATERPILLARS

Technical Rider



Contacts:

Artistic Director
Jenni Kallo

jenni.kallo@gmail.com
info@kallocollective.com

Technical information:

Elina Nopanen
Lighting Designer

e-mail: elina.nopanen@gmail.com
phone: +358 50 468 5660

Show information:

- Name of the performance: Caterpillars
- 2 x performers
- 1 x technician
- show duration 45 min, no intermission
- contemporary circus show for all age over 4 years, mimic, clownery
- language: no words

Stage requirements:

- measurements: height min. 4 m, width min. 10 m, depth min. 6 m
- black floor, dance carpet
- black curtains, black back drop, black box (with side wings)
- preference: not rised stage
- the stage surface should be flat and free from splinters, holes and other obstructions
- the stage area must be free of any large set pieces, pianos, choral shells etc.
- stage must be swept clean prior to the company`s arrival
- no aerial rigging
- no flying set pieces

Lighting requirements:

- A theatrical digital memory DMX lighting console with cues and crossfade function
- 34 dimmer channels
(NOTE: audience lighting is not included in these dimmer channels)
- dimmable audience light required
- 2 x direct power on a stage 230V AC power with European two-pin schuko plug with cable enough
- lights preferably pre-hung and patched prior company's arrival
- company will provide an adjusted lighting plan (attached universal light plan)

Colour filters:

L111
L103
L115
L776
L501
L162
L107
L079
L139
L053
L088

+ 11 x break up gobos

Sound requirements:

- competent PA system
- 2 x stage monitors
- mixer
- music is played from laptop, provided from the company
- RCA - miniplug cable needed

- NOTE: mixer needs to be situated next to lighting desk and space enough for laptop, there is one person doing the light and sound in a show

- IMPORTANT: 230V AC power with european two-pin schuko plug at FOH position

Technical house crew needed:

- 1 stage technician
- 1 light technician for set up 10 hours
- 1 sound technician for set up 4 hours
- 2-3 helpers after the show

- house crew should be familiar with the venue and the house electricity feeds, dimmers, sound system etc.
- the crew must be free from other duties during set-up times!

Backstage:

- changing room for 2 performers
- iron and ironing board
- broom and dust pan
- a mirror with fine lights
- toilet
- sandwiches, fresh fruits, bottled water

- storage space for 3 suitcases

Schedule:

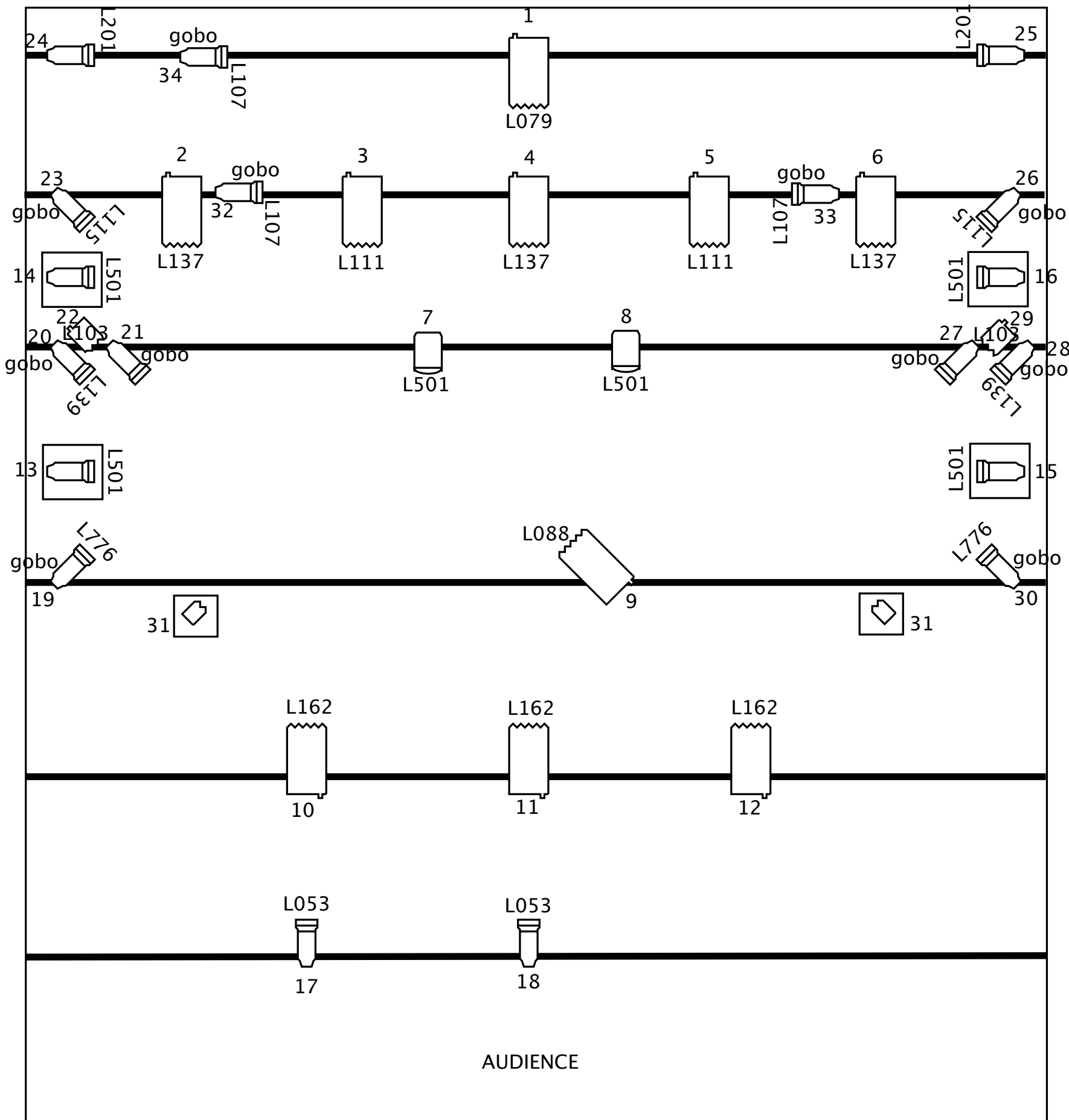
Approximate

- Get in time 12h

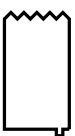
We need to get in one day before the performance. Before show we need 3 hours time on the stage to prepare and 1 hour afterwards to pack up.

- Get out time 3h

BACKDROP



KEY:



FRESNEL 1kW



FLOOR PLATE



ETC S4 jr. zoom 25-50°



PC 1kW



PINSPOT

NOT IN SCALE!

KALLO COLLECTIVE: CATERPILLARS

LIGHTING DESIGN: ELINA NOPANEN

CONTACT:
elina.nopanen@gmail.com

+358 50 468 5660